



Shibuya-san is a tourist information center located on the first floor of the Shibuya Fukuras building, which is directly connected to JR Shibuya Station. This center is also an arrival point for airport buses from Narita and Haneda, serving as a gateway to Shibuya for many tourists visiting from both within Japan and abroad. It provides a wide range of information and services to help tourists.

SERVICES



Tourist
Information



Luggage
Deposit



Airport Bus



Battery
Charge



Free Wi-Fi



Money
Exchange

DATA

Address Shibuya Fukuras 1F, 1-2-3 Dogenzaka, Shibuya-ku, 150-0043 Tokyo

Access 1 minute on foot from Shibuya Station
(JR, Tokyo, Tokyo Metro, Keio Inokashira lines)

Opening hours 10:00-20:00

MAP



SPECIAL SUPPORTER : TOKYU LAND CORPORATION

shibuya-san



WEB



coming soon

This project is supported by a grant from the Tokyo Metropolitan Government and the Tokyo Convention & Visitors Bureau for the promotion of nighttime tourism.



Nightspots



vol.02
English

A Different Kind of Nighttime Guide

SHIBUYA'S MUSIC BARS & OUTDOOR TERRACES

Get to know Shibuya inside and out

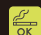
Recommended by the staff of shibuya-san, a tourism concierge!

Where to
go at night?



ABOUT THIS GUIDE...

From the countless nightspots in the Shibuya area, the shibuya-san staff have carefully selected only the bars they genuinely recommend, places where they have personally researched and found to be exceptional, such as music bars that pay meticulous attention to their sound and song selection, each boasting unique concepts, and bars featuring terrace seating where you can relax and enjoy drinks outdoors. Check it out if you're unsure what to do at night.

 :Smoking allowed

CONTENTS

MUSIC BARS

01	SOUND BAR HOWL	P.02
02	Music Bar ROCKAHOLIC - Shibuya -	P.02
03	MITSUKI	P.03
04	Grill Dining & Music Bar STEREO	P.03
05	DJ BAR Bridge	P.04
06	DJ BAR OATH	P.04
07	THE MUSIC BAR -CAVE SHIBUYA-	P.05
08	music bar 45	P.05
09	DJ BAR KOARA	P.05

TERRACE BARS

01	bills Omotesando	P.06
02	Irish pub & Restaurant Failte	P.06
03	CENTRAL "SHOKUDO" HARAJUKU	P.07
04	Design Festa Cafe & Bar	P.07
05	CÉ LA VI TOKYO 18F RESTAURANT & SKY BAR	P.08
06	The beer house Shibuya	P.08
07	ØL BY OSLO BREWING CO.	P.08
08	Mikkeller Kiosk/Bar	P.09
09	factory	P.09
10	NORTHVILLAGE Shibuya UDA River City	P.09

BONUS PICKS

01	SHIBUYA BREWERY	P.10
02	Cataratas Bottle Shop	P.10
03	MADAM WOO TOKYO	P.10

*The information in this guide is as of December 2025. Business hours, holidays, menus, etc. may change.

*Regular holidays such as New Year and Obon holidays are not considered.

MUSIC BARS

01 SOUND BAR HOWL

The calm ambience and soft lighting at this music bar create the perfect space to unwind and have a relaxing evening. They offer exceptional music along with drinks and food carefully selected by the manager. You can also request up to three songs by writing your favorite song titles on a form.

POPULAR MENU

- Perfume Gin & Tonic
- le Mojito
- BOSS Regular Cream Cheese with Corned Beef
- Unnecessarily Stylish Potato Salad



DATA

Opening hours CAFE 13:00-19:00 (Last Order 18:30),
BAR 19:00-4:30 (Last Order 4:00)
*18 and 19 year olds can order non-alcoholic
drinks until 22:00
Closed CAFE Wednesdays, BAR Open Everyday
Price ¥3,000- *Including ¥700 table charge
BAR/No one under 18 *ID required



MAP



Music Bar ROCKAHOLIC - Shibuya - 02

A must-visit for rock and metal fans. Music is blared in sync with music videos, creating a charged and lively atmosphere. A favorite hub for friendly music lovers where you can sing and chat together as you party all night long. They also accept song requests.

POPULAR MENU

- Jägerbomb Train
- Ozzy Osbourne - The Ultimate Gin
- Slipknot No. 9 Iowa Whiskey

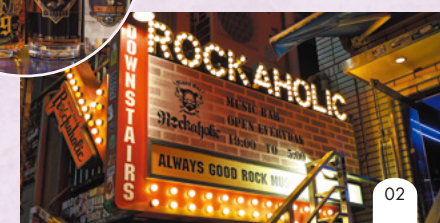


DATA

Opening hours 19:00-4:00 (Last Order / Food 3:00, Drink 3:30)
Closed Open Everyday
Price ¥2,000-



MAP



03 MITSUKI

A music bar with the concept of "a Tokyo music bar like no other." Complete with a DJ booth, they have created an enchanting allure with the floor space bathed in orange lighting and enshrouded in smoke. They hold events with different DJs every day, playing house, disco, techno, and more, so check out their social media!

POPULAR MENU

- Mezcal Shot
- Mezcal Cocktail
- Japanese Whiskey
- Draft Beer



DATA

Opening hours 22:00-5:00
Closed Sundays *Open on days before public holidays
Price ¥3,000- *Including the ¥1,500 entry fee
No one under 20 *ID required



05 DJ BAR Bridge

This music bar located on the top floor of a building near Hachiko Square & Shibuya Crossing is a one-minute walk from Shibuya Station. Live DJs play a wide array of music genres every day from their top-notch sound system beside the dance floor. The bar's deep interior also affords seating to leisurely revel in the music. Be sure to also try their original cocktails!

POPULAR MENU

- Homemade Ginger Ale Moscow Mule
- Homemade Coffee Shochu with Oolong Tea
- Fresh Grapefruit Salty Dog



DATA

Opening hours 20:00-5:00
Closed Irregular holidays on Sundays
*Open on days before public holidays
Price ¥3,000- *Including the ¥1,000-¥1,500 entry fee
No one under 20 *ID required



Grill Dining & Music Bar STEREO 04

You can take in breathtaking views of Scramble Crossing below from their location on the 38th floor of Shibuya Sakura Stage, a large-scale complex in Shibuya. Have a sensational time sipping on artistic, richly aromatic cocktails while listening to music played from speakers by Taguchi, a renowned Japanese audio manufacturer.

POPULAR MENU

- Champagne Colada
- Cosmo Fizz
- Burrata Cheese and Seasonal Fruits
- Garlic Shrimp with Aioli Sauce



DATA

Opening hours 11:30-15:00 (Last Order 13:30),
17:30-22:30 (Last Order 20:30)
Closed Sundays
Price ¥2,500- *Including ¥550 table charge

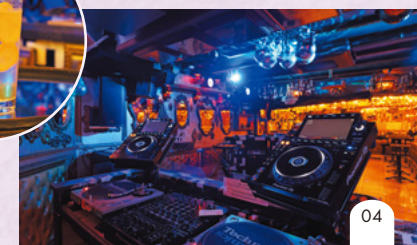


DJ BAR OATH 06

Open the door and you'll encounter a space where the chandeliers, disco balls, and antique-filled interior shine with dazzling radiance. Their outstanding audio equipment also delivers a powerful sound. Have a thrilling night with affordable drinks as you immerse yourself in great music from resident and guest DJs, featuring mainly house, techno, and disco!

POPULAR MENU

- Homemade Honey Whiskey Sour
- Homemade Lemon Sour
- Draft Beer



DATA

Opening hours 20:00-4:00, Fridays, Saturdays,
and days before holidays 21:00-5:00
Closed Sundays
Price ¥3,000- *Including the ¥1,000-¥2,000 entry fee



MUSIC BARS

07 THE MUSIC BAR - CAVE SHIBUYA -

A sanctuary for music lovers boasting large top-tier speakers from the UK on both sides of the bar counter. This is a spot where you can listen to over 3,000 carefully curated vinyl records on high-end audio equipment. They offer a wide variety of original cocktails.

POPULAR MENU

- Espresso Martini
- High Hopes
- Rare Cutlet Sandwich Made with Juku Aged-Wagyu Sirloin
- Wild Boar Meat & Homemade Tortilla Tacos



DATA

Opening hours 18:00-3:00
Closed Sundays, public holidays, and days before public holidays
Price ¥4,000- *Including the ¥1,000 entry fee



music bar 45

08

A music bar to indulge in such Japanese music as city pop and dance music along with other music from around the world, mainly on vinyl records. They also carry rare Japanese whiskeys and gins, and conversing with the knowledgeable and easy-going owner adds to this bar's appeal.

DATA

Opening hours 18:00-23:00 (Last Order 22:30), Thursdays and Fridays 18:00-1:30 (Last Order 1:00)
Closed Mondays, Sundays, and public holidays
Price ¥2,000- *Including ¥500 table charge



POPULAR MENU

- Various Japanese Whiskeys
- Craft Gin
- Shochu
- Awamori



09 DJ BAR KOARA

A hotspot for music lovers since opening in 2007. They hold DJ events every night, featuring house, disco, techno, and more. With the bar counter at the center and the DJ booth and dance floor in the back, you can easily drop by even if you're alone.

POPULAR MENU

- DON PALOMA
- Draft Beer
- Coffee Shochu



DATA

Opening hours 20:00-3:00, Fridays and Saturdays 21:00-5:00, Sundays 17:00-23:00
Closed Open Everyday
Price ¥3,000- *Including the ¥1,000 entry fee
No one under 20



TERRACE BARS

01 bills Omotesando

bills is an all-day dining restaurant from Australia located on the 7th floor of Tokyu Plaza Omotesando "Omokado." The terrace seating offers views of the rooftop garden "Omohara Forest," making it a special place to savor refined, delectable food and drinks while gazing at the lights of Omotesando and Harajuku.

POPULAR MENU

- Roast Cod
- Prawn & Arugula Linguine
- Pavlova
- bills Saké & Cucumber



DATA

Opening hours 8:30-22:00 (Last Order / Food 21:00, Drink 21:30)
Closed Irregular Holidays
Price ¥3,000-



Irish pub & Restaurant Failte

02

Experience the feel of an authentic Irish pub! They serve six types of draft beer sourced from carefully selected producers in Ireland, the UK, Belgium, Scotland, Japan, and elsewhere. The terrace seating area features wooden tables and chairs where smoking is allowed. Guinness and Fish & Chips come recommended.

POPULAR MENU

- Guinness
- London Pride
- Fish & Chips



DATA

Opening hours 17:00-24:00 (Last Order / Food 23:00, Drink 23:30), Saturdays, Sundays, and public holidays 15:00-23:00 (Last Order / Food 22:00, Drink 22:30)
Closed Open Everyday
Price ¥4,000-
*Terrace seating only
*Minors must be accompanied by a guardian.



TERRACE BARS

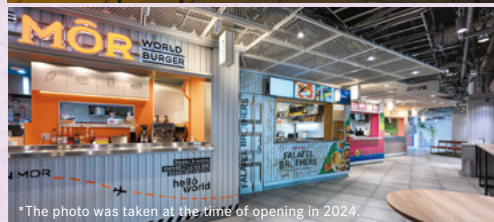
03 CENTRAL “SHOKUDO” HARAJUKU

(Harakado 5-6F *Including some restaurants on the 2nd and 3rd floors)

CENTRAL “SHOKUDO” HARAJUKU in Tokyu Plaza Harajuku “Harakado” has over 20 casual restaurants offering a wide variety of food and drinks. The rooftop terrace also offers an expansive view of Jingumae Crossing. Get some takeout food and drinks to relish in the nightscape from wherever you like!

POPULAR MENU

- Draft Beer (THE STANDARD DRINKS)
- Various International Beers (FALAFEL BROTHERS HARAJUKU)
- Frozen Margarita (MEXICAN GRILLAVOCADO HARAKADO)



*The photo was taken at the time of opening in 2024.

DATA

Opening hours 11:00-23:00 *Varies depending on the restaurant
Closed Irregular Holidays
Price ¥3,000-

WEB



05 CÉ LA VI TOKYO 18F RESTAURANT & SKY BAR

This terrace of the Restaurant & Sky Bar utilizing the rooftop of Tokyu Plaza Shibuya delivers spectacular nightscapes of Shibuya Scramble Crossing, Tokyo Tower, and even Tokyo Skytree® in the distance.

POPULAR MENU

- SEASONAL COCKTAILS - Winter Edition -
- GINGER SPIKE
- YUGIRI YUZU MIST



DATA

Opening hours 11:00-15:00 (Last Order / Food 14:00, Drink 14:30),
17:00-23:00 (Last Order / Food 22:00, Drink 22:30)

Closed Open Everyday
Price ¥8,000-

DINNER/No one under 13

MAP



The beer house Shibuya 06

The perfect place for beer lovers! Sit atop elevated chairs at the terrace seating along the pedestrian walkway and relax while taking in the cityscape. You can partake in German beer and Tiger beer on tap, as well as over 100 types of bottled beer from around the world.

POPULAR MENU

- Various Bottled Beers
- Tiger Draft Beer
- German Draft Beer



DATA

Opening hours 13:00-23:30
(Last Order / Food 22:30, Drink 23:00)

Closed Open Everyday
Price ¥2,500-

MAP



Design Festa Cafe & Bar 04

At this gallery cafe & bar, you can revel in eclectic artwork from two terraces, one a garden cafe where you can view the artists' works surrounded by greenery and the other an open terrace featuring striking pink wall murals. All the food and drinks are reasonably priced. There's also a coffee stand.

POPULAR MENU

- Jameson Standard
- Craft Beer
- Hot Dog
- Hand-drip Coffee



DATA

Opening hours 11:00-23:00 (Last Order 22:00)
*Coffee stand 10:00-20:00

Closed Open Everyday
Price ¥1,000-



07 ØL BY OSLO BREWING CO.

This Scandinavian and Japanese craft beer bar is tucked away in a quiet back street of Shibuya, complete with a cozy terrace just in front of the entrance. Their lineup of 20 different beers on tap changes daily. The Norwegian brown cheese is a popular snack.

POPULAR MENU

- Craft Beer
- Carnitas Tacos
- Brown Cheese
- Guacamole & Chips



DATA

Opening hours 12:00-24:00 (Last Order 23:30),
Fridays and Saturdays 12:00-1:00 (Last Order 24:30)

Closed Open Everyday
Price ¥2,000-

*Terrace seating only

MAP



TERRACE BARS

08 Mikkeller Kiosk/Bar

This is a craft beer bar from Denmark. There are always 20 types of beer on tap, and you can also partake in limited-edition beers and rare brands that are hard to come by. The refrigerator is stocked with canned beers from Japan and abroad. Say cheers with a beer in hand on their open terrace!

POPULAR MENU

- Draft Beer
- Various Canned & Bottled Beers
- Japanese Fried Chicken
- Homemade Potato Chips



DATA

Opening hours 12:00-24:00 (Last Order 23:30),
Fridays and Saturdays 12:00-24:30 (Last Order 24:00)
Closed Open Everyday
Price ¥1,500-



BONUS PICKS

01 SHIBUYA BREWERY

The biggest draw here is being able to savor fresh beer delivered straight from the brewery. Their signature beers are the subtly vanilla-scented SHIBUYA Weizen and the crisp, aromatic SHIBUYA Pale Ale. Enjoy your drinks together with their sausage platter.

POPULAR MENU

- SHIBUYA WEIZEN
- SHIBUYA PALEALE
- Assorted Sausage Platter
- Tri-colored French Fries



DATA

Opening hours 11:00-23:00
(Last Order / Food 22:00, Drink 22:30)
Closed Open Everyday
Price ¥3,000-



factory

09

The interior is tastefully adorned with books, records, and paintings collected by the owner, and the terrace is lined with all kinds of chairs, creating a cozy atmosphere to relax and unwind. They serve a wide variety of beers from around the world and the finest Japanese craft beers.

POPULAR MENU

- KAGUA Rouge Beer
- Far Yeast IPA Beer
- Homemade Butter Chicken Curry
- Butcher Shop Gyoza



DATA

Opening hours 12:00-22:00 (Last Order / Food 21:00, Drink 21:30),
Fridays and days before holidays 12:00-23:00
(Last Order / Food 22:00, Drink 22:30)
Closed Saturdays, Sundays, and public holidays
Price ¥2,000-

*Terrace seating only



Cataratas Bottle Shop 02

This liquor shop also serves as a bar & cafe and has over 50 varieties of cup sake from across Japan and over 100 varieties of Japanese and international craft beer. Unique brands of cup sake are also popular as souvenirs. This shop serves four types of draft beer and also allows you to taste samples.

POPULAR MENU

- Cup Sake
- Japanese Craft Beer
- Oden



DATA

Opening hours 11:00-24:00,
Sundays and public holidays 11:00-20:00
Closed Open Everyday
Price ¥1,000-



10 NORTHVILLAGE Shibuya UDA River City

Welcome to this cyberpunk world aglow with neon lights! This shisha (hookah) cafe invites you to indulge in a wide array of flavors. Complete with deck chairs on the terrace, you can also bask in the night city, gazing below at bustling Shibuya as you enjoy your shisha.

POPULAR MENU

- Nudy Yuzu Sour
- Foam Matcha Kahlua Milk
- Specialty Coffee



DATA

Opening hours 10:00-5:00 (Last Order 4:30)
Closed Open Everyday
Price ¥4,000-
No one under 20 *ID required

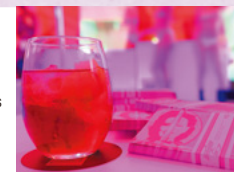


03 MADAM WOO TOKYO

This is an American-style gentlemen's club, but all genders are welcome. This pulsating space features hip-hop music spun by DJs, sexy live performances by dancers, and futuristic interior design.

POPULAR MENU

- Don Julio 1942
- Dom Pérignon Luminous
- CÎROC
- Hennessy VS



DATA

Opening hours 22:00-4:00 (Last Order 3:45)
Closed Mondays, Sundays, and public holidays
Price ¥10,000- *Including the ¥3,000 per hour
No one under 20 *ID required

